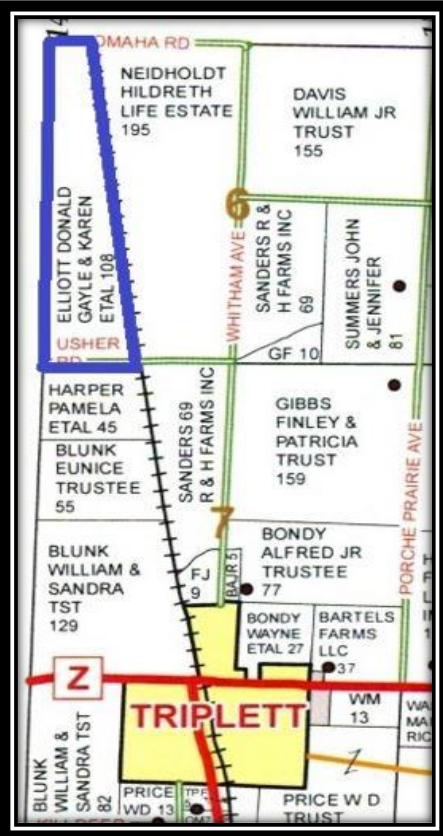


Triplett, Missouri Bottomland Farm

LAND AUCTION

Friday, March 27th @ 10:00 a.m.

Auction Held at the American Legion Hall – Hwy 24 Brunswick, MO
Farm located 1-mile Northwest of Triplett on North side of Usher Rd & on South side of Omaha Rd.
Take Route Z west of Triplett to Topeka Ave., then North 1 mile to Usher Rd; then East ½ mile to farm on North side of Rd. Follow signs from Route Z in Triplett.



Legal Description: That part of the West Half (W ½) of Section Six (6), Township 54, Range 20, lying West of the Wabash Railroad Right-of-Way, Chariton County, MO.

Land Description: Farm consists of approximately 108 Acres Deeded with 114 Acres, m/l calculated by FSA. 100% tillable, mostly Booker with small areas of Tina & Colo on the south end. A good producing and highly tillable farm.

Terms of Auction: 10% of purchase price as Earnest Money deposit upon entering into Real Estate Purchase Contract. Balance due upon closing within approximately 30 days. Buyer must have financing secured prior to bidding. Possession granted upon closing. See full list of the full terms and conditions of the Auction on our website, EnyeartAuctionRealty.com. *The Elliott's absolutely intend to sell this farm to the highest bidder; however, it sells subject to their confirmation.*

Go To

EnyeartAuctionRealty.com

for more photos & complete Terms



D. Gayle & Greg Elliott, Sellers

ENYEART
Auction & Realty LLC

112 E Jackson Highway 24 Keytesville, MO

Daniel Enyeart, Broker & Auctioneer
General Certified Appraiser
660-651-1101

Loren Enyeart, Salesperson
General Certified Appraiser
660-651-9889

Clayton Enyeart, Salesperson
Auctioneer & Appraiser
660-651-3396